

new anchor rocna 15 and bow roller upgrade

Our Catalina 36 came with a very rusty danforth anchor. So it's time to upgrade to a rocna 15 bought on defender.

As soon as the rocna 15 showed up, it was my surprise to realize how big it is. After a lot of research let's upgrade the bow roller!



Rocna 15

Hardware requirement

Equipment requirements



- Catalina Direct bow roller:

- <http://www.catalinadirect.com/index.cfm/product/927/anchor-roller-.cfm>
- <http://www.catalinadirect.com/index.cfm/product/1585/anchor-roller-fastener-kit.cfm>

I decided to get the bow roller from catalina direct few other options who could have been a good fit:

- lewmar bow roller
 - https://www.amazon.com/Lewmar-Stainless-Steel-Delta-Roller/dp/B001SJLKJC?ie=UTF8&psc=1&redirect=true&ref_=od_aui_detailpages00
- windline brm-3 bow roller
 - <http://www.defender.com/product.jsp?path=-1%7C2276108%7C2276122%7C2304756&id=31709>
- mantus marine bow roller
 - <https://www.mantusmarine.com/wp-content/uploads/2016/03/BOW-ROLLER-BR1-ASSEMBLY.pdf?cc0d81>
- Garhauer Marine bow roller AR-30 (look very similar at the one bought on catalina direct)
 - <https://garhauermarine.com/ProductSpecs.cfm?pid=129>

Tools requirements

- Grinder: <https://www.amazon.com/gp/product/B00U24VG0W> (\$99)
- Sawzaw: <https://www.amazon.com/gp/product/B000DN1CP2> (\$85)
- 15mm wrenches (x2)

Remove legacy bow roller starboard bolt

Not easy to remove (suprised? :)), it looks it has been there

for a very long time. Used 2 x 15mm wrenches to get through it.





Cut off the vertical part of the original anchor roller

- carbide tipped sawzaw blades (x2):
 - <https://www.amazon.com/gp/product/B01MQWFQBV> (\$24 for 2 of them, I needed both)
 - I have been using the 6", but I have the feeling, it would have been better with a 4" blade, maybe it would have saved me one blade.
- grinding wheel
 - <https://www.amazon.com/gp/product/B000004RH8I> (\$7)
 - use to make prettier the rough work generated by the reciprocating saw





**Position the anchor roller to find
the good fit**



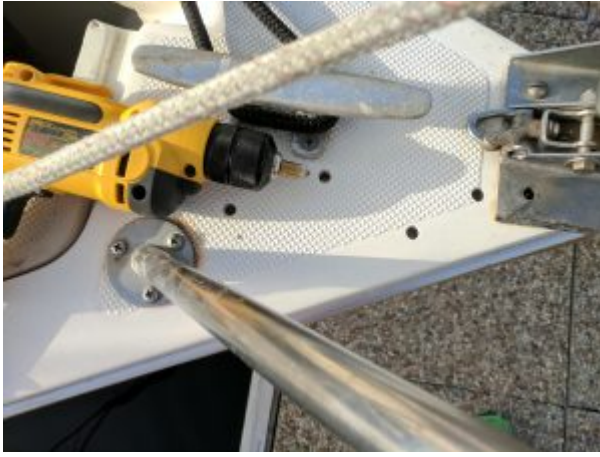


Drill holes in the deck

Sealing Deck Penetrations To Prevent Core Rot







Epoxy the holes

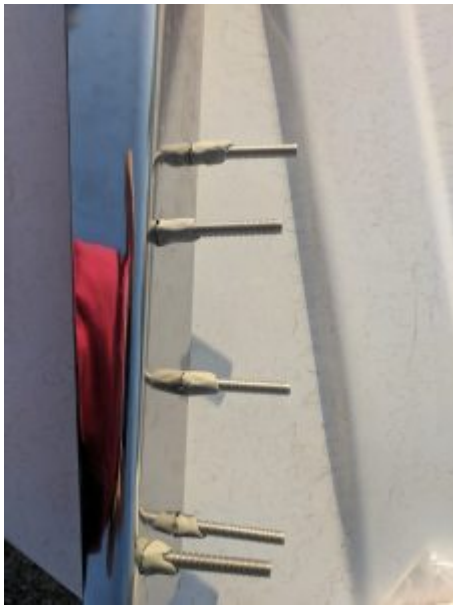


**Cut the backing plate to fit
Catalina 36 bow**





Bedding



Fastening

I had to order longer bolts to match my setup.





Install Rocna anchor



close with some monel wire.



Anchoring!

I didn't get a chance yet to anchor since it was installed.

